



WRITE a FAIRY TALE

Your assignment is to create your very own fairy tale with cultural influence of your chosen country. You must follow the guidelines below in order to receive a passing grade. This tale will be posted on your project's board for all to enjoy!

Take a look at the characteristics of a fairy tale.
The elements that are in **BOLD** writing **MUST** be included in your story:

ELEMENTS OF A FAIRY TALE



1. Fairy tales usually begin with "Once upon a time..."
2. Fairy tales happen in the long ago.
3. **Fairy tales have fantasy and make believe in them.**
4. Fairy tales usually have royalty.
5. **Fairy tales have a good and an evil character.**
6. Fairy tales may have magic, giants, elves, witches, or fairies.
7. **Fairy tales have a problem that needs to be solved and very often it will happen in three tries.**
8. **Fairy tales have happy endings.**

You must also follow the guidelines below in order to complete your Fairy Tale:

1. Your story title must be creative, should spark interest, and it needs to be related to the story.
2. Your Fairy Tale clearly uses information from your research. The country of origin has influenced the tale.
3. All Fairy Tales **MUST** be typed.
4. When typing your story you must follow these guidelines.
 - You need to use a font size no smaller than 10 and no bigger than 12. The title is excluded from this requirement.
 - You should use a font that is **EASY TO READ**.
 - Your story **MUST** be 1.5 spaced.
 - Your story can't be longer than three pages long.

PRE-WRITING and DRAFTING DAY: 2/9

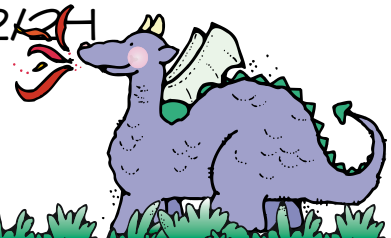
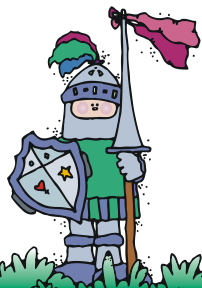
1st DRAFT DUE: 2/13

IN CLASS REVISION and RESEARCH DAYS:

2/14 and 2/15

2nd DRAFT DUE: 2/21

FINAL PROJECT DUE: 2/24





Write a Fairy Tale Story Project Rubric



Category	4	3	2	1
Title	Title is creative, spark interest, is original, and is related to the story and topic.	Title is related to the story and topic.	Title is present, but does not appear to be related to the story and topic.	No title.
Writing Process	Student devotes a lot of time and effort to the writing process (prewriting, drafting, reviewing, and editing). Works hard to make the story wonderful.	Student devotes sufficient time and effort to the writing process (prewriting, drafting, reviewing, and editing). Works great in class and gets the job done!	Student devotes some time and effort to the writing process, but was not very thorough. Does enough to get by and doesn't make good use of class time.	Student devotes little time and effort to the writing process. Evidence of the process isn't present.
Characters THINK STEAL!	The main characters are named and clearly described in text. Readers could describe the characters accurately using details.	The main characters are named and described. Readers have a general idea who's who!	The main characters are named. The reader knows very little about the characters. The descriptions are vague or flat.	The characters are hardly developed. The reader is confused as to the characters' roles and persona.
Problem	It is very easy for the reader to understand the problem the main characters face and why it is a problem. The problem is related to the country of origin.	It is fairly easy for the reader to understand the problem the main characters face and why it is a problem.	It is fairly easy for the reader to understand the problem the main characters face, but it is not clear why it is a problem.	There is not a problem developed that needs to be solved.
Setting: It must relate to the country of origin to earn any credit here.	Many vivid, descriptive words are used to tell when and where the story took place.	Some vivid, descriptive words are used to tell the audience when and where the story took place.	The reader can figure out when and where the story took place, but the author didn't supply much detail.	The reader has trouble figuring out when and where the story took place.
Solution	The solution to the character's problem is easy to understand. There are no loose ends.	The solution to the character's problem is easy to understand.	The solution to the character's problem is a little hard to understand.	No solution is attempted or it is impossible to understand.
Spelling & Punctuation	There are no spelling or punctuation errors in the final draft.	There is one spelling or punctuation error in the final draft.	There are 2-3 spelling and punctuation errors in the final draft.	The final draft has more than 3 spelling and punctuation errors.
Organization	The story is very well organized. One idea or scene follows another in a logical sequence with clear transitions.	The story is pretty well organized. One idea or scene may seem out of place. Clear transitions are used.	The story is a little hard to follow. The transitions are sometimes not clear.	Ideas and scenes seem to be randomly arranged.

